

What a difference a day makes

In only twenty-four hours this new build three story eight-apartment luxury detached villa was completely furnished from top to bottom.

Jodi McLean captures the magic of a real makeover of epic proportions and marvels at the sensational and speedy result.



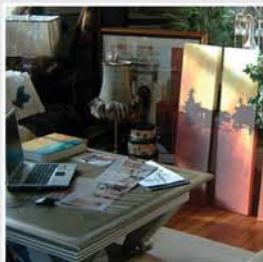
Husband and wife design team Carlo Sambucci and Loraine Chassels.

Taste By The Yard.....

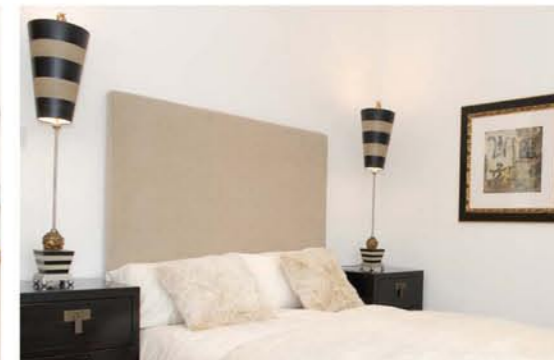
From a site visit and survey or from submitted plans EX Showhouse Furniture and XS Interiors can design and plan your bespoke interior. With beautiful furniture from around the world and immediate availability the seamless supply makes for a quicker better interior solution.



From one room to a complete property contact EX Showhouse Furniture and XS Interiors to discuss your interior project and furniture requirements. 0141 942 0519



Danny McRae and Loraine Chassels admire the finished result.



Builder, Danny McRae's attention to detail and passion for building clearly went beyond just bricks and mortar when he decided to fully furnish his latest property for sale, a decision he admits was bang on. 'This property is particularly special and I wanted to give it the personality that would clearly identify its individuality. It needed a face,' said Danny. 'Lorraine's vision, the furniture she provided, and the speed in which it was achieved went way beyond my expectation. I am absolutely delighted with the finished result,' he enthused.

'I knew as soon as I saw this superb property that it was a 'supermodel' to begin with,' commented Loraine of EX Showhouse Furniture and XS Interiors, 'but even supermodels only really shine when their hair and make up is complete and they are adorned with beautiful clothes.'

When Loraine was invited by Danny to survey his property it was 90% complete. 'As gorgeous as the property was, I could see in my mind's eye that with the right design, layout and furniture I could take it to another level,' said Loraine. Within an hour of meeting on site, Loraine and Danny had discussed the 'style and flavour' of the interior they wanted to create and only a few days later Loraine had planned the complete

interior from top to bottom. The following day, seven tons of designer furniture arrived and Loraine's team went about their business of creating the 'X factor' to complete Danny's dream. The transformation between an unfurnished property and a professionally tastefully furnished property is incredible. In the instance of a builder or developer it gives potential buyers the very important spatial conception they need and a true understanding of room layouts and their potential lifestyle. Share in this 'What's Where' to get the look.

Lounge/Dining Room

The lounge boasts matching black and white Spanish designer leather sofas. One of the sofas runs in an L shape along the fireplace wall while the other is used to cleverly split the lounge and dining areas. Glass furniture is used to keep the room open and airy and to echo the huge expanse of glass double height windows. The dining room suite @ £995 coordinates with the coffee and lamp tables @ £275 and £225 respectively. The lighting, with its shiny chrome tripod stands and oversize black shades, further enhance the contemporary focal point fireplace with its black granite and steel. Soft creams soften the otherwise monochromatic scheme while

accent red warms it and adds the colour dynamic recreated throughout the whole house. Try a 'run of art' for maximum effect. As seen here Loraine has used a tall modern sunset oil on canvass collection @ £385 on a large wall to add scale and spice.

Mezzanine Family Room/ Office

This fabulously flexible space with amazing views is set up as both a family chill-out zone and home office. With a glass and steel desk and occasional tables the room is softened with a beautiful organic shaped cream chenille sofa from Spain @ £699 with luxurious cherry red fabric feature chairs @ £425. Use of varying textures, including the chenille of the sofa to the lattice cream leather of the desk chair to the ceramic pot on the coffee table, offer interest to the viewer. The black and white pure wool rug from Denmark @ £250 picks up the monochrome vibe from the lounge downstairs and blend the two spaces seamlessly together.

Guest Suite

Just one of three beautiful guest rooms this one features a tall block headboard @ £225 and black and white pinstripe lamps @ £75. Artificial trees like the tall parlour palm at the mezzanine balustrade and the bay trees

shown here add a little of the outdoors inside and at only £85 for the finest bay trees around they are well worth a thought. Match up your cushions and throw to top and tail your room and add a little colour, as seen here.

Master Suite

This sexy yet simplistic bedroom is layered with sensual latte and cream with a touch of black as the follow through from the public rooms. Grand design lamps from New Orleans @ £180 sharpen the boucle wallboard @ £220 and contrast well with the wonderful arctic fox fur bedding and cushions. A dab of gold on the picture frames and matching mirror warm the colour way.

Luxurious Family Bathroom

Don't forget to add a dash of colour and dress the bathrooms. Shown here is a superb mirrored stand @ £125 with a shiny steel armillary to add a surprising twist. Set your ledges with a run of florals in your colour dynamic to complete the look.

EX Showhouse Furniture supplied every item within this stunning property. To visit their private design studio in Bearsden simply call 0141 942 0519 for an appointment.



WEBSITE NOW LIVE

www.exshowhousefurniture.com

www.xsinteriors.com

WEBSITE NOW LIVE